

## Essential

Tools that help manage your vehicles and staff remotely.



### FLEET AGENT ESSENTIAL



#### Increase Productivity

- Track staff vehicles.
- Increase productivity of workers, reducing time wastage
- Monitor time on-site.



#### Encourage Safer Driving

- Get alerts on speeding and excessive driving activity.
- Rank staff based on their driving behaviour.
- Ensure a safer workplace when staff use company vehicles.



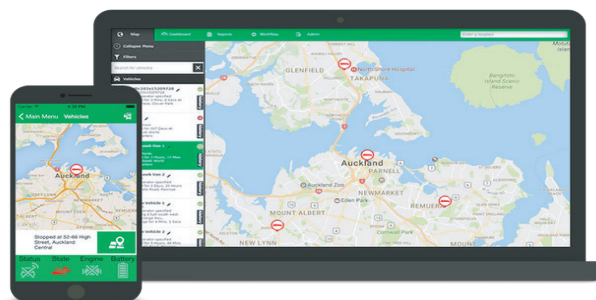
#### Limit Unauthorised Vehicle Usage

- Monitor work and personal vehicle usage.
- Track traveling routes, stop times and places visited.
- Manage personal and business usage.



#### Actuate Billing and Proof of Work

- Monitor job mileage and hours for accurate job invoicing.
- Reconcile invoicing, ensuring correct time sheets.
- Monitor travel times.



### OPEN PLAN

Installed Device		Annually		Monthly
<b>\$399</b> per vehicle	+	<b>\$250</b> per year	or	<b>\$24</b> per month

### 24 MONTH PLAN

Installed Device		Monthly
<b>\$0</b> per vehicle	+	<b>\$39</b> per month

*\*Volume discounts available for 15 vehicles or more.*

### Compliance and Service Package Add-on (Optional)

**+\$5**

per month  
per vehicle

#### Manage your fleet compliance Requirements.

- WOF, COF and Rego management.
- RUC and RUC Refund management.
- Service management.

### Simple Terms and Conditions

- Hardware has a 24 month Warranty.
- Fix term contracts full back to open plan automatically at the end of the 24 months.
- Installation is completed at a Fleet Agent authorized workshop at extra cost.
- Payment method is either via direct Debit or Credit Card.

please visit [www.fleetagent.co.nz](http://www.fleetagent.co.nz) for full terms and conditions



[www.fleetagent.co.nz](http://www.fleetagent.co.nz)



0800 10 40 70



@FleetAgentNZ

## Premium

A complete fleet managed service where we manage your vehicles for you.



### FLEET AGENT PREMIUM



#### Essential GPS Solution

You will get the complete essential GPS solution to increase productivity, Limit unauthorized vehicle usage and encourage safer driving.



#### Fuel Card

You'll receive fuel cards with zero fees and are accepted by all major service stations across NZ and help you manage your fuel costs.



#### Compliance Management

Fleet Agent will purchase RUC licenses, automatically renew your vehicle registrations and ensure your vehicles meet New Zealand compliance laws.



#### Priority Servicing

We'll manage, book or WOF, COF and Servicing across New Zealand and make sure your drivers keep the vehicles compliant.



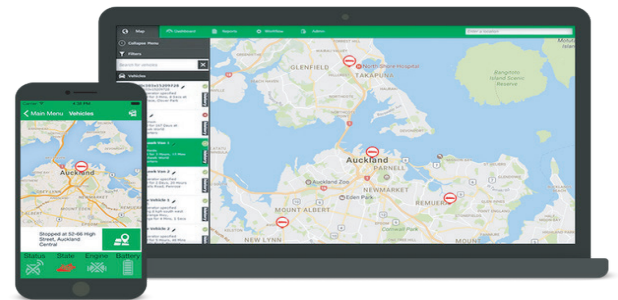
#### Roadside Assistance

You'll receive roadside assistance nationwide, every day of the year. We help out on most breakdown issues 24/7 every day of the year.



#### One Tax Invoice

All of the services are compiled and delivered to you each month in a single tax invoice online.



### OPEN PLAN

Installed Device	Annually	Monthly
<b>\$399</b> per vehicle	<b>\$300</b> per year	<b>\$29</b> per month

### 24 MONTH PLAN

Installed Device	Monthly
<b>\$0</b> per vehicle	<b>\$49</b> per month

\*Volume discounts available for 15 vehicles or more.

### Simple Terms and Conditions

- Hardware has a 24 month Warranty.
- Fix term contracts full back to open plan automatically at the end of the 24 months.
- Installation is completed at a Fleet Agent authorized workshop at extra cost.
- Payment method is either via direct Debit or Credit Card.

please visit [www.fleetagent.co.nz](http://www.fleetagent.co.nz) for full terms and conditions



## Dynamic

Customised solution for  
large, complex or  
mixed asset fleets

### FLEET AGENT DYNAMIC



#### Premium Services

Gain access to any of the standard tools and managed service features to customize a solution that meets your requirements.



#### Customized Dashboards

Visualise the information you need based on Fleet Agent and external information on one dashboard. Monitor simple KPI's.



#### Customized Workflows

Design your workflow graphically to build the operational flow of work your business needs.



#### Product Integration

We can integrate the platform to your ERP, Financial, HR and other operational systems to streamline your business processes.



#### Mixed Asset Tracking

Track both non-powered and powered assets on one platform, from generators to scrapers, excavators to dump trucks.



#### Job and Task Cost Management

Monitor asset utilisation per task or project for project costing, external billing or asset rental.



#### Plant Pre-Inspection Management

Digitalise the asset inspection process by creating questions for an operator to answer before they start using the machine. Build workflow off any issues found.

### Mixed and Complex Fleets Connectivity

Non Powered Assets



White Fleets



Plant/Yellow Fleet



### Workflow



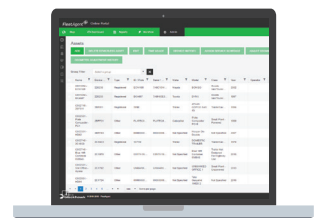
### Dashboards



### Mapping



### Reporting



Fleet  
Management

Proof  
of Service

Health  
and Safety

Cost  
Management

RUC &  
Compliance

Service and  
Maintenance

